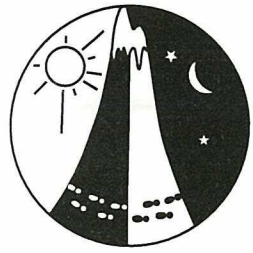


Missing Setter Rogaine

WARA Autumn 12 Hour. 27 April 2002

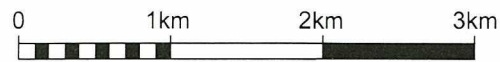
Incorporating the Paddy Pallin
Junior Cadet Challenge

Paddy Pallin



LEGEND

SCALE 1:50,000, 5 metre contour interval



Government of
Western
Australia

Western Australian
Rogaining Association
PO Box 1201 Subiaco,
WA 6904

Department of Sport
and Recreation

wa.rogaine.asn.au

It is a requirement of the Water Authority
that all water should be crossed at culverts
or road crossings to preserve the quality
of the drinking water.

| | |
|---------------------|-----------|
| Building | ■ |
| Control | ○ 70 |
| Contours | |
| Hash House | △ |
| Magnetic North Line | ↑ |
| Transmission Line | —+—+—+—+— |
| Track, Major Gravel | —+—+— |
| Track, Minor Gravel | —+— |
| Watercourse | |
| Water Drop | ○ W |

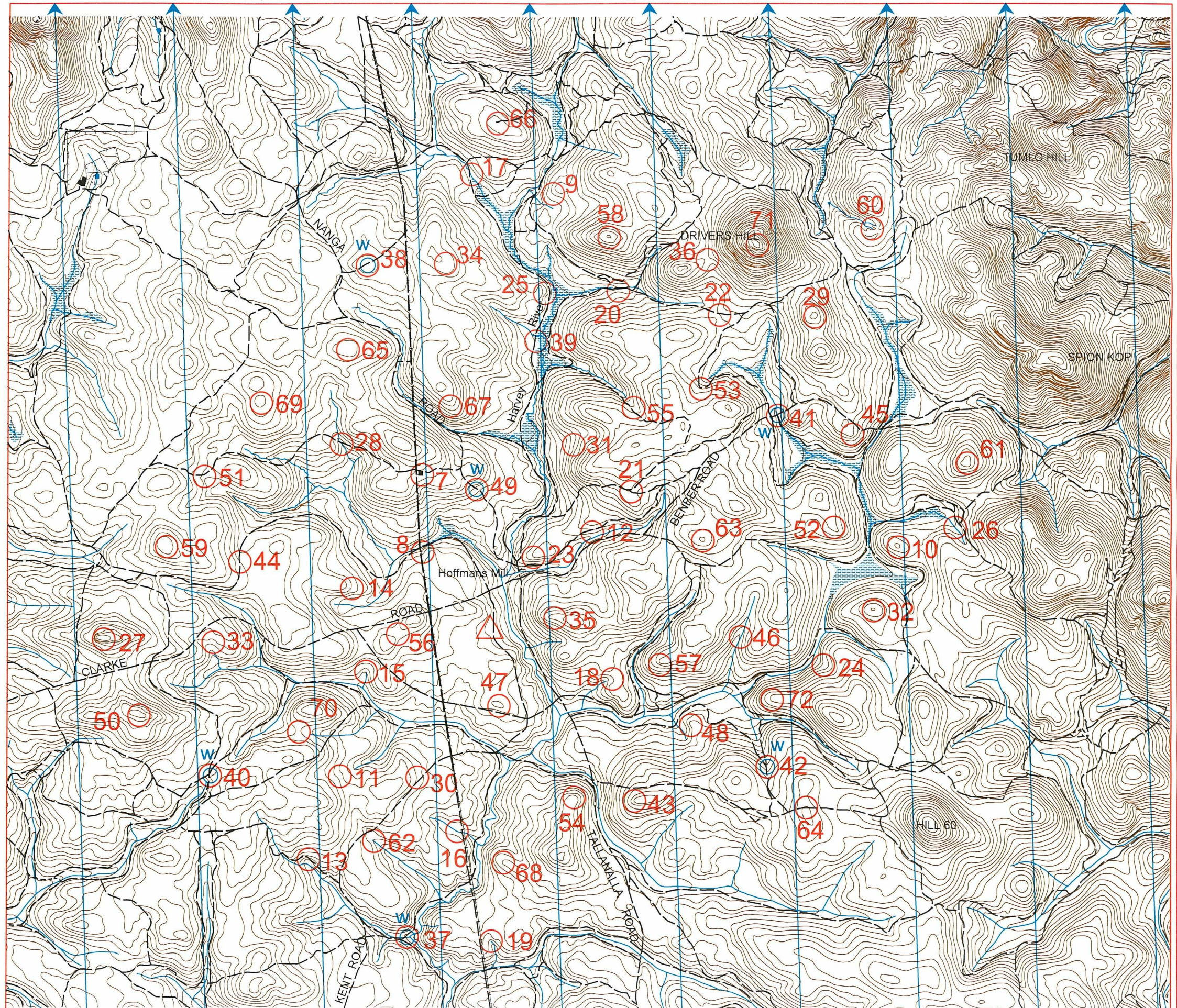
This map was produced using OCAD.
Data supplied by DOLA and used under
copy licence 393/93. Possession of this
map does not give right of entry to this area.

SETTERS

Andrew Ivey
Gary Chambers
Paul Mullins

VETTERS

Nick & Debbie Lethbridge
Nick Acquarola



2002 - The Missing Setter. WARA Autumn 12 Hour. 27th April 2002

| No. | Description | Points | No. | Description | Points | Important Information |
|-----|---|--------|-----|---|--------|--|
| 1 | | | 43 | The spur | 60 | Control Cards |
| 2 | | | 44 | A track junction | 60 | |
| 3 | | | 45 | The spur | 60 | From 0930 Saturday |
| 4 | | | 46 | In the water course | 60 | Briefing |
| 5 | | | 47 | The summit | 60 | |
| 6 | | | 48 | The spur | 60 | 0945 Saturday |
| 7 | The ruin | 20 | | | | Start |
| 8 | A power line pylon | 20 | 49 | A log blocking a/the track (Water Drop) | 70 | |
| 9 | The spur | 20 | 50 | The summit | 70 | 1000 Saturday |
| 10 | The summit | 20 | 51 | The track in the gully | 70 | Finish |
| 11 | The south side of a 40m x 30m recent clearing | 20 | 52 | The broad spur | 70 | |
| 12 | A bend on a track | 20 | 53 | On a log blocking the track | 70 | 2200 Saturday |
| | | | 54 | The spur | 70 | Hash House |
| 13 | The bend in the track | 30 | | | | |
| 14 | The spur | 30 | 55 | In the gully | 80 | Opens at 1600 Sat |
| 15 | The gully | 30 | 56 | The broad saddle | 80 | Closes at 2300 Sat |
| 16 | In the water course | 30 | 57 | The spur | 80 | Opens 0630 Sun |
| 17 | The track water course junction | 30 | 58 | Between 2 large jarrah trees (2 metres apart) on the summit | 80 | |
| 18 | The head of the gully | 30 | 59 | On a large sheoak on the summit | 80 | Closes 0830 Sun |
| 19 | In the water course | 30 | 60 | The water course between 2 large granite outcrops | 80 | Sunset |
| 20 | The track water course junction | 30 | | | | |
| 21 | A track junction | 30 | 61 | The broad summit | 90 | 1741 |
| 22 | A track junction | 30 | 62 | The head of the gully | 90 | Moonrise |
| 23 | The spur | 30 | 63 | The summit | 90 | |
| 24 | In the gully on a track | 30 | 64 | The northern end of the summit | 90 | 1802 |
| | | | 65 | The eastern end of broad summit | 90 | Late Penalty |
| 25 | The spur | 40 | 66 | At the end of the track on the summit | 90 | |
| 26 | In the water course | 40 | | | | 10 points per minute or part minute |
| 27 | The summit | 40 | 67 | The spur | 100 | |
| 28 | The track creek junction | 40 | 68 | The spur | 100 | Controls Used |
| 29 | The summit | 40 | 69 | The broad summit | 100 | |
| 30 | The centre of a 40m x 40m recent clearing | 40 | 70 | A track bend in the broad saddle | 100 | |
| 31 | A track junction | 40 | 71 | The summit | 100 | |
| 32 | The summit | 40 | 72 | On a large old jarrah tree on the spur | 100 | |
| 33 | A track water course junction | 40 | | | | |
| 34 | On a track bend on southern end of broad summit | 40 | | Water Drops: At Controls 37,38,40,41, 42 & 49 | | |
| 35 | The spur | 40 | | | | |
| 36 | The saddle | 40 | | Patrolled Roads: | | |
| | | | | Clarke Road, Kent Road, Nanga Road, Tallanalla Road & Benber Road | | |
| 37 | A track water course junction (Water Drop) | 50 | | | | |
| 38 | The summit on the track (Water Drop) | 50 | | | | |
| 39 | The track junction | 50 | | | | |
| 40 | The track junction (Water Drop) | 50 | | | | |
| 41 | The track water course junction (Water Drop) | 50 | | | | |
| 42 | Fork in the track (Water Drop) | 50 | | | | |
| | | | | | | Total Points |
| | | | | | | 66 |
| | | | | | | 3660 |